



VENTILATED REFRIGERATION

MAIN CHARACTERISTICS

“NETTUNO” MODEL REFRIGERATED MULTIDESKS IS SUITABLE FOR THE DISPLAY OF GASTRONOMIC PRODUCTS, DAIRY PRODUCTS, SNACK AND DRINKS. INTERNALLY REALISED IN STAINLESS STEEL AISI304, WITH ADJUSTABLE PLATS, RETRACTABLE BOTTOM TRAYS AND 30 MM-THICK END SIDES IN STAINLESS STEEL AT SIGHT. INNER LIGHTING THROUGH LED ON TOP, BACK CLOSING WITH TWISTED NIGHT CURTAIN OR SLIDING DOORS IN DOUBLE-GLAZING ON REQUEST.(FOR ENERGETIC SAVING)

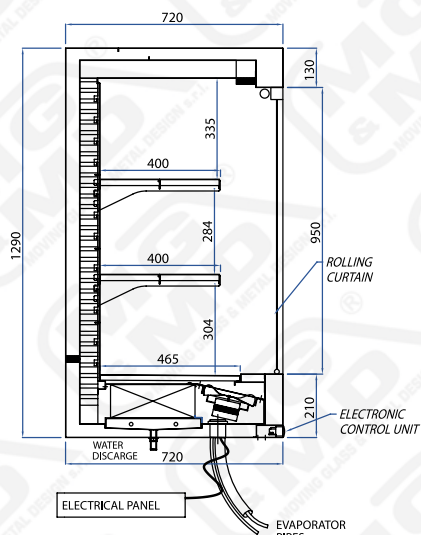
****All rights reserved.**
Reserved literary production. It is forbidden to reproduce (even partially) images, texts, prices or technical sheets, without MD&MD srl signed authorization.

OPTIONALS

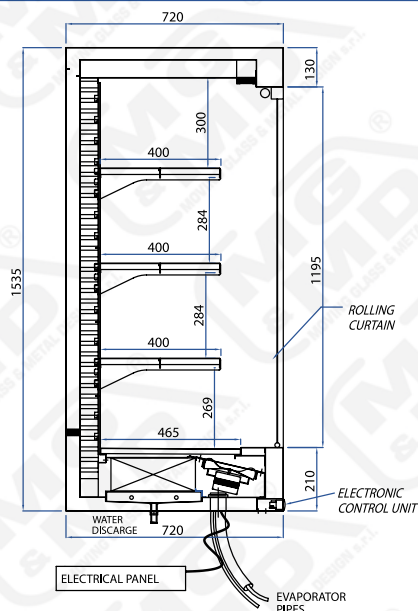
- ADDITIONAL INTERMEDIATE SHELF
- END SIDE IN DOUBLE-GLAZING
- SLIDING DOORS IN DOUBLE-GLAZING
- BUILT-IN MOTOR CONNECTED BELOW THE COUNTER
- MOTOR FOR REMOTE CONNECTION BY 10 MT OF DISTANCE.
- BASEMENT UNDERNEATH IN WATERPROOF ENNOBLED WOOD INSIDE AT SIGHT, WITHOUT DECORATIVE PANELS OUTSIDE, WITH BEIGE ANTI - CRASH PVC EDGES AND BACK OPEN COMPARTMENTS.
- PAINTED BASEMENT WITH 40 X 40 MM TUBULARS, WITHOUT BOTTOM, OPEN ON ALL SIDES
- STAINLESS STEEL GRID FOR COVERING THE ENGINE
- SUPPORT FOR HOOKS (FOR COLD CUTS)

VENTILATED REFRIGERATED VERSION

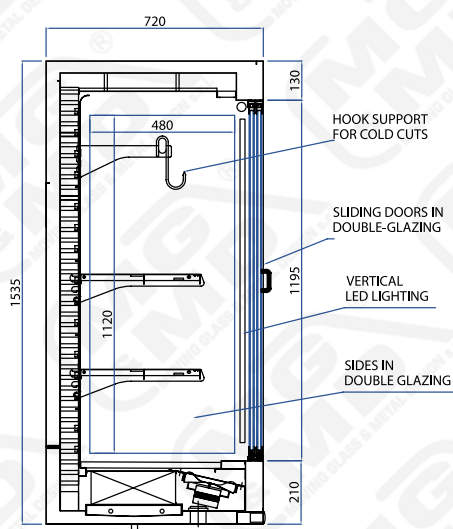
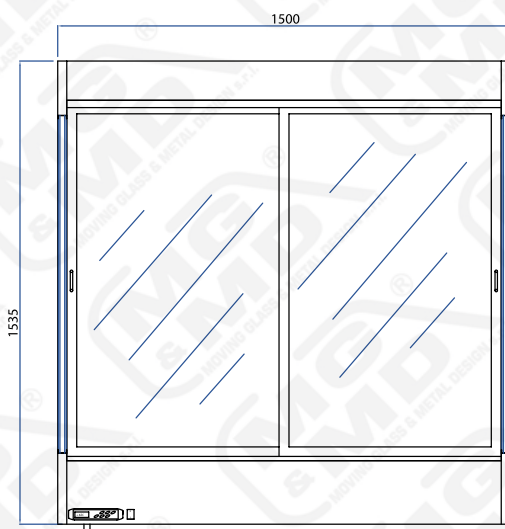
> A



> B



> OPTIONAL



TANK DEPTH: 720mm

STANDARD LENGTHS: 1200mm / 1500mm / 1710mm / 1960mm / 2220mm

FEEDING: 220V./50Hz./1

DISPLAY CASE WITH BODY INSULATED BY LOW-DENSITY ECOLOGICAL POLYURETHANE, WITH R134A-VALVE VENTILATED EVAPORATOR SYSTEM, TEMPERATURE CONTROLLER BY ELECTRONIC CONTROL UNIT. WITH N. 2 ADJUSTABLE INTERMEDIATE SHELVES IN INOX. AUTOMATIC DEFROSTING WITH ELECTRICAL RESISTANCES. WITH ROLLING NIGHT CURTAIN, ADJUSTABLE INTERMEDIATE SHELVES IN STAINLESS STEEL AS STANDARD. +4/+8°C WORKING TEMPERATURE.

MOTOR COOLING PERFORMANCE TO -10°C:

L=1200mm	1010W
L=1500mm	1120W
L=1710mm	1490W
L=1960mm	1490W
L=2220mm	1490W

ENVIRONMENTAL CLIMATIC CLASS: 3 +25°C 60% R.H. - EN-ISO 23953 - 1/2

Due to technical progress, MG&MD reserves the right to change the technical characteristics without notice.

POSSIBLE COUPLING

> “A” PROPOSAL

EXAMPLE OF COMPOSITION BETWEEN THE “NETTUNO” WALL-CABINET AND THE T.N. VENTILATED REFRIGERATED MODULE WITH GLASS DOORS EQUIPPED WITH INNER LED LIGHTING.

